



# LUMAWISE LED HOLDERS

SOLDERLESS TERMINATION  
OF CHIP-ON-BOARD (COB) LED

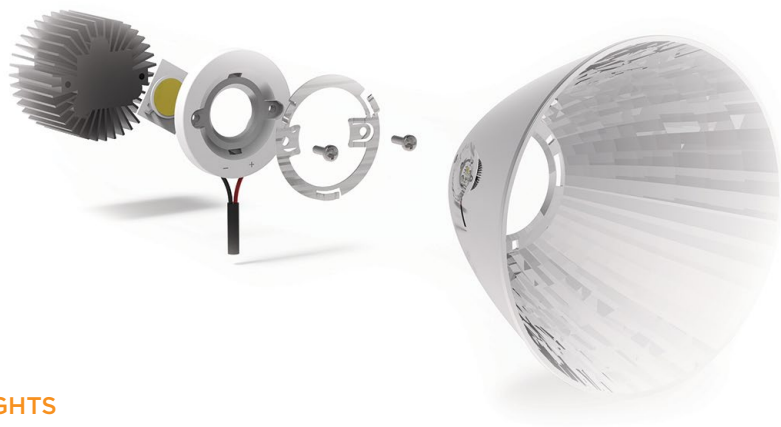
Today's market drive to mass adoption of solid state lighting technology requires rapid development and introduction of lighting fixtures that incorporate LED arrays. TE Connectivity provides easy to use LED holders that integrate thermal, electrical, optical and mechanical connections for leading edge luminaries.

## Applications

- Spot Lights
- Track Lights
- Recessed Downlights
- High Bay Lights
- Retrofit Lamps
- Wall Sconces
- Street Lights
- Runway Lights

## Key Benefits

- Solderless electrical connection to LED
- Integrated poke-in wire termination
- Snap-in LED retention on some versions
- Alignment features simplify installation
- Easy attachment of secondary optics
- High-reflectivity polymeric housing materials
- Wide operating temperatures



SPOT LIGHTS



TRACK LIGHTS



STREET LIGHTS



RETROFIT LAMPS



WALL SCONCES



RECESSED DOWNLIGHTS



## LUMAWISE LED Holder Solutions

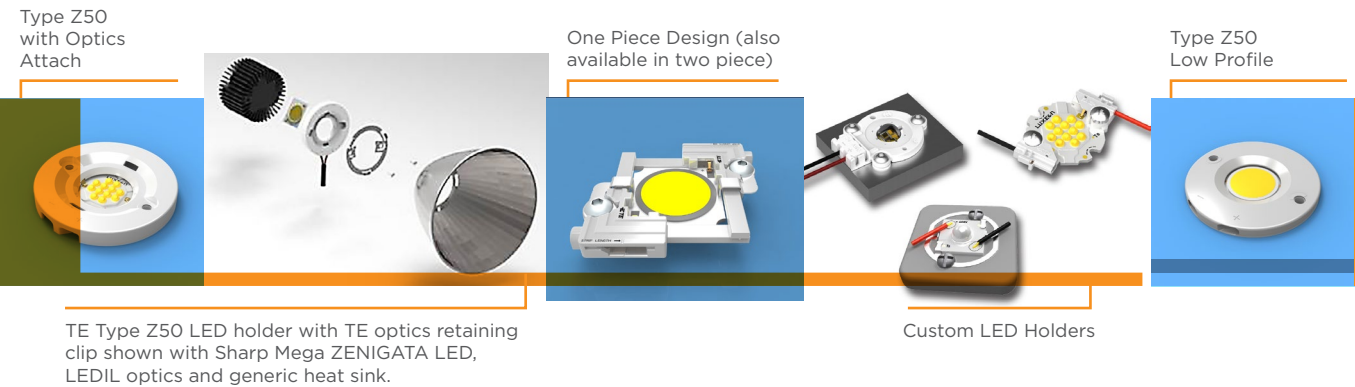
TE Connectivity provides a broad range of solderless LED holders that provide fixture designers an easier way to integrate LEDs into their designs.

The scalable, Type Z and custom holder platforms each offer the designer a unique suite of features and benefits.

Our LED holders form the core of the fixture ecosystem by integrating LED electrical, mechanical, thermal, and optical interconnectivity. These holders can accelerate time to market, minimize applied costs, facilitate easy integration, and improve assembly efficiency when compared to traditional methods of LED integration.

## Type Z LED Holders

The Type Z LED holders provide a quick and easy solderless connection to LED arrays and are designed to enable customers to develop Zhaga compliant modules. Standard and low profile Type Z32 and Z50 LED holders feature snap-in LED retention that secures the LED in the holder during assembly and ensures proper positioning in the fixture. Offered with or without optics attachment features, the Type Z LED holders are available in a configuration to suit your needs. The optics attachment version functions with Carclo or LEDIL optics to provide the lighting designer with beam shaping flexibility in spot and downlight applications.



## Scalable LED Holders

The Scalable LED holder platform enables connectivity to a wide range of LED arrays and is available in pre-assembled one piece & two piece configurations for ultimate design flexibility. The two piece design utilizes the same part for both positions and it's scalability makes it broadly applicable to multiple commercially available LED arrays. Designed with the future in mind, the Scalable LED holder platform is readily adaptable to tomorrow's LED arrays. The inherent flexibility of the platform allows accommodation of a virtually infinite range of LED package sizes and plating materials.

## Custom LED Holders




TE offers a variety of custom LED holder solutions optimized for use with manufacturer specific LED arrays.

# LUMAWISE LED Holders

CHIP-ON-BOARDS				TE LED Holder Solution				
				Circular Holder		Scalable LED Holder		Custom Solutions
LED Brand	LED Type	Light Emitting Surface(Ø)	LED Board size [mm]	1 - Z50 Low Profile (Zhaga Inspired) 2 - Z50 Zhaga Profile Holder	3 - Z32 Mini CoB Holder 4 - Z35 Mini CoB Holder	5 - One Piece Solution 6 - Two Piece Solution		
BRIDGELUX	LS Rectangle Array	8.25 mm	14 x 18			<a href="#">1-2154857-3</a> <sup>6</sup>		
	ES Rectangle Array	16.5 mm	17.5 x 25.8			<a href="#">3-2154874-2</a> <sup>5</sup> / <a href="#">1-2154857-2</a> <sup>6</sup>		
	H6	6.4 mm	13.35x13.35		<a href="#">2213678-5</a> <sup>4</sup> / <a href="#">2213678-6</a> <sup>4</sup>			
	H9	9.3 mm	15.85x15.85			<a href="#">5-2154874-2</a> <sup>5</sup> / <a href="#">2-2154857-1</a> <sup>6</sup>		
	H12	12.4 mm	17.85x17.85	<a href="#">2213401-1</a> <sup>1</sup> / <a href="#">2213401-2</a> <sup>2</sup>				
	H15	14.9 mm	19x19	<a href="#">2213254-1</a> <sup>1</sup> / <a href="#">2213254-2</a> <sup>2</sup>				
	V22	22 mm	28 x 28	<a href="#">2213480-1</a> <sup>1</sup>		<a href="#">6-2154874-3</a> <sup>5</sup> / <a href="#">2-2154857-2</a> <sup>6</sup>		
CITIZEN	CLL02X / CLU02X	9.8 mm	13.5 x 13.5		<a href="#">2213678-5</a> <sup>4</sup> / <a href="#">2213678-6</a> <sup>4</sup>	<a href="#">6-2154874-1</a> <sup>5</sup> / <a href="#">2-2154857-1</a> <sup>6</sup>		
	CLU700, CLU025, CLU027	6.0 mm	13.5 x 13.5		<a href="#">2213678-5</a> <sup>4</sup> / <a href="#">2213678-6</a> <sup>4</sup>	<a href="#">6-2154874-1</a> <sup>5</sup> / <a href="#">2-2154857-1</a> <sup>6</sup>		
	CLL03X / CLU03X	14.5 mm	19 x 19	<a href="#">2213254-1</a> <sup>1</sup> / <a href="#">2213254-2</a> <sup>2</sup>		<a href="#">6-2154874-2</a> <sup>5</sup> / <a href="#">2-2154857-1</a> <sup>6</sup>		
	CLU720	11 mm	19 x 19	<a href="#">2213254-1</a> <sup>1</sup> / <a href="#">2213254-2</a> <sup>2</sup>		<a href="#">6-2154874-2</a> <sup>5</sup> / <a href="#">2-2154857-1</a> <sup>6</sup>		
	CLL04X / CLU04X	22 mm	28 x 28	<a href="#">2213480-1</a> <sup>1</sup>		<a href="#">6-2154874-3</a> <sup>5</sup> / <a href="#">2-2154857-2</a> <sup>6</sup>		
	CLU730	13 mm	28 x 28	<a href="#">2213480-1</a> <sup>1</sup>				
	CLL05X / CLU05X	32.8 mm	38 x 38			<a href="#">6-2154874-4</a> <sup>5</sup> / <a href="#">2-2154857-2</a> <sup>6</sup>		
	L330	15 mm	28 x 19			<a href="#">2-2154857-3</a> <sup>6</sup>		
L340	20 mm	28.5 x 28.5			<a href="#">2-2154857-3</a> <sup>6</sup>			
CREE	CXA 13XX	6 mm	13.5 x 13.5			<a href="#">2-2154857-2</a> <sup>6</sup>		
	CXA 15XX	9 mm	15.85 x 15.85			<a href="#">5-2154874-2</a> <sup>5</sup> / <a href="#">2-2154857-3</a> <sup>6</sup>		
	CXA 18XX	12 mm	17.85 x 17.85			<a href="#">2-2154857-1</a> <sup>6</sup>		
	CXB 1830	12 mm	17.85 x 17.85	<a href="#">2213401-1</a> <sup>1</sup> / <a href="#">2213401-2</a> <sup>2</sup>		<a href="#">2-2154857-1</a> <sup>6</sup>		
	CXA 2011	16.2 mm	22 x 22			<a href="#">5-2154874-1</a> <sup>5</sup> / <a href="#">1-2154857-3</a> <sup>6</sup>		
	CXA 25XX / CXB 25XX	19 mm	23.85 x 23.85	<a href="#">2213407-1</a> <sup>1</sup> / <a href="#">2213407-2</a> <sup>2</sup>		<a href="#">5-2154874-3</a> <sup>5</sup> / <a href="#">2-2154857-2</a> <sup>6</sup>		
	CXA 30XX / CXB 30XX	23 mm	27.35 x 27.35	<a href="#">2213480-2</a> <sup>1</sup>		<a href="#">2-2154857-2</a> <sup>6</sup>		
CXA 35XX	30 mm	34.85 x 34.85			<a href="#">2-2154857-2</a> <sup>6</sup>			
EDISON OPTO	2PHM09x	11.2 mm	13.5 x 13.5		<a href="#">2213678-5</a> <sup>4</sup> / <a href="#">2213678-6</a> <sup>4</sup>	<a href="#">5-2154874-1</a> <sup>5</sup> / <a href="#">1-2154857-3</a> <sup>6</sup>		
	2PHM30x	11.2 mm	19 x 19	<a href="#">2213254-1</a> <sup>1</sup> / <a href="#">2213254-2</a> <sup>2</sup>		<a href="#">5-2154874-2</a> <sup>5</sup> / <a href="#">2-2154857-2</a> <sup>6</sup>		
	2PHM40X	11.2 mm	28 x 28	<a href="#">2213480-1</a> <sup>1</sup>		<a href="#">6-2154874-3</a> <sup>5</sup> / <a href="#">2-2154857-2</a> <sup>6</sup>		
EVERLIGHT	EAHP1215 series	9 mm; 10.5 mm	12 x 15		<a href="#">2213118-1</a> <sup>3</sup> / <a href="#">2213678-3</a> <sup>4</sup> <a href="#">2213678-4</a> <sup>4</sup>	<a href="#">2-2154857-2</a> <sup>6</sup>		
	EAHP2024 series	16.2 mm	20 x 24	<a href="#">2213130-1</a> <sup>1</sup> / <a href="#">2213130-2</a> <sup>2</sup>		<a href="#">2-2154857-2</a> <sup>6</sup>		
	Xuan1313	9.8 mm	13 x 13			<a href="#">6-2154874-1</a> <sup>5</sup> / <a href="#">2-2154857-1</a> <sup>6</sup>		
	EAHP1919Wxx	14.5 mm	19 x 19	<a href="#">2213254-1</a> <sup>1</sup> / <a href="#">2213254-2</a> <sup>2</sup>		<a href="#">6-2154874-2</a> <sup>5</sup> / <a href="#">2-2154857-1</a> <sup>6</sup>		
LG INNOTEK	LEMWM18580LG10AO		18 x 24.4			<a href="#">2-2154857-2</a> <sup>6</sup>		
	LEMWM18680LG10AO		18 x 24.4			<a href="#">2-2154857-2</a> <sup>6</sup>		
	LEMWM18780LG10AO		18 x 24.4			<a href="#">2-2154857-2</a> <sup>6</sup>		
	LEMWM28C80LZxxxx		28 x 28	<a href="#">2213480-1</a> <sup>1</sup>		<a href="#">2-2154857-2</a> <sup>6</sup>		
	LEMWM28C80HZxxxx		28 x 28	<a href="#">2213480-1</a> <sup>1</sup>		<a href="#">2-2154857-2</a> <sup>6</sup>		
LUMILEDS	Luxeon CoB 105, 107, 109		12 x 15		<a href="#">2213118-2</a> <sup>3</sup> <a href="#">2213678-3</a> <sup>4</sup> / <a href="#">2213678-4</a> <sup>4</sup>			
	1202s/1202s Crisp White	6.5 mm	12 x 15		<a href="#">2213118-2</a> <sup>3</sup> <a href="#">2213678-3</a> <sup>4</sup> / <a href="#">2213678-4</a> <sup>4</sup>			
	1202/1203/1202CRSP/1203CRSP	9 mm	16 x 19	<a href="#">2213382-1</a> <sup>1</sup> / <a href="#">2213382-2</a> <sup>2</sup>		<a href="#">2-2154857-2</a> <sup>6</sup>		
	1204/1205/1208/1204CRSP/1205CRSP/1208 CRSP	13 mm; 15 mm	20 x 24	<a href="#">2213130-1</a> <sup>1</sup> / <a href="#">2213130-2</a> <sup>2</sup>		<a href="#">2-2154857-3</a> <sup>6</sup>		
	1211/1211 CRSP/1216	19 mm	28 x 28	<a href="#">2213480-1</a> <sup>1</sup>				

# LUMAWISE LED Holders

CHIP-ON-BOARDS				TE LED Holder Solution			
				Circuler Holder		Scalable LED Holder	
LED Brand	LED Type	Light Emitting Surface(Ø)	LED Boardside [mm]	1 - Z50 Low Profile (Zhaga Inspired) 2 - Z50 Zhaga Profile Holder	3 - Z32 Mini CoB Holder 4 - Z35 Mini CoB Holder	5 - One Piece Solution 6 - Two Piece Solution	
LUMINUS	CXM-9/CLM-9	9.6 mm	13.5 x 13.5		<a href="#">2213678-5</a> <sup>4</sup> / <a href="#">2213678-6</a> <sup>4</sup>	<a href="#">6-2154874-1</a> <sup>5</sup> / <a href="#">2-2154857-1</a> <sup>6</sup>	
	CXM-11	11.6 mm	19 x 19	<a href="#">2213254-1</a> <sup>1</sup> / <a href="#">2213254-2</a> <sup>2</sup>		<a href="#">6-2154874-2</a> <sup>5</sup> / <a href="#">2-2154857-1</a> <sup>6</sup>	
	CXM-14/CLM-14	14.3 mm	19 x 19	<a href="#">2213254-1</a> <sup>1</sup> / <a href="#">2213254-2</a> <sup>2</sup>		<a href="#">6-2154874-2</a> <sup>5</sup> / <a href="#">2-2154857-1</a> <sup>6</sup>	
	CXM-22/CLM-22	22 mm	28 x 28	<a href="#">2213480-1</a> <sup>1</sup>		<a href="#">6-2154874-3</a> <sup>5</sup> / <a href="#">2-2154857-2</a> <sup>6</sup>	
Nichia	S-series	Multiple LES	12 x 15		<a href="#">2213118-1</a> <sup>3</sup> <a href="#">2213678-3</a> <sup>4</sup> / <a href="#">2213678-4</a> <sup>4</sup>	<a href="#">2-2154857-1</a> <sup>6</sup>	
	L-seires	Multiple LES	16 x 19	<a href="#">2213382-1</a> <sup>1</sup> / <a href="#">2213382-2</a> <sup>2</sup>		<a href="#">2-2154857-1</a> <sup>6</sup>	<a href="#">2134318-1</a> : LUMIPACK N Assembly <a href="#">2174024-1</a> : TYPE-NL2 1 Piece
	J-series	Multiple LES	19 x 24	<a href="#">2213580-1</a> <sup>1</sup> / <a href="#">2213580-2</a> <sup>2</sup>		<a href="#">2-2154857-1</a> <sup>6</sup>	
OSRAM	Soleriq 9 series	9.8 mm	13.5 x 13.5		<a href="#">2213678-5</a> <sup>4</sup> / <a href="#">2213678-6</a> <sup>4</sup>	<a href="#">6-2154874-1</a> <sup>5</sup> / <a href="#">2-2154857-1</a> <sup>6</sup>	
	Soleriq 13 series	13.5 mm	18 x 18	<a href="#">2213401-1</a> <sup>1</sup> / <a href="#">2213401-2</a> <sup>2</sup>		<a href="#">2-2154857-2</a> <sup>6</sup>	
	Soleriq 13 Gen 2	13.9 mm	19 x 19	<a href="#">2213254-1</a> <sup>1</sup> / <a href="#">2213254-2</a> <sup>2</sup>		<a href="#">6-2154874-2</a> <sup>5</sup> / <a href="#">2-2154857-2</a> <sup>6</sup>	
	Soleriq 19 series	19 mm	24 x 24	<a href="#">2213407-1</a> <sup>1</sup> / <a href="#">2213407-2</a> <sup>2</sup>		<a href="#">5-2154874-3</a> <sup>5</sup> / <a href="#">2-2154857-3</a> <sup>6</sup>	
PANASONIC	DMS122***F	8.0 mm	13.5 x 13.5		<a href="#">2213678-5</a> <sup>4</sup> / <a href="#">2213678-6</a> <sup>4</sup>	<a href="#">6-2154874-1</a> <sup>5</sup> / <a href="#">2-2154857-1</a> <sup>6</sup>	
	DMS124***G/ DMS124***F/125***F	11.1 mm	19 x 19	<a href="#">2213254-1</a> <sup>1</sup> / <a href="#">2213254-2</a> <sup>2</sup>		<a href="#">6-2154874-2</a> <sup>5</sup> / <a href="#">2-2154857-1</a> <sup>6</sup>	
	DMS125/126/128***G DMS128***F DMS099***F	13.8 mm	19 x 19	<a href="#">2213254-1</a> <sup>1</sup> / <a href="#">2213254-2</a> <sup>2</sup>		<a href="#">6-2154874-2</a> <sup>5</sup> / <a href="#">2-2154857-1</a> <sup>6</sup>	
	DMS120***G/DMS120***F	17.0 mm	28 x 28	<a href="#">2213480-1</a> <sup>1</sup>		<a href="#">6-2154874-3</a> <sup>5</sup> / <a href="#">2-2154857-2</a> <sup>6</sup>	
	DMS12C***G/DMS150***F	20.0 mm	28 x 28	<a href="#">2213480-1</a> <sup>1</sup>		<a href="#">6-2154874-3</a> <sup>5</sup> / <a href="#">2-2154857-2</a> <sup>6</sup>	
	DMS18C***G/ DMS12C/18C***F	22.0 mm	28 x 28	<a href="#">2213480-1</a> <sup>1</sup>		<a href="#">6-2154874-3</a> <sup>5</sup> / <a href="#">2-2154857-2</a> <sup>6</sup>	
	DMS18Q***G/ DMS18Q***F	33.0 mm	38 x 38			<a href="#">6-2154874-4</a> <sup>5</sup> / <a href="#">2-2154857-2</a> <sup>6</sup>	
SAMSUNG	LC006B / LC008B	8 mm	13.5 x 13.5			<a href="#">1-2154857-2</a> <sup>6</sup>	
	LC026B	17 mm	21.5 x 21.5	<a href="#">2213258-1</a> <sup>1</sup> / <a href="#">2213258-2</a> <sup>2</sup>		<a href="#">2-2154857-3</a> <sup>6</sup>	
	LC033B	17 mm	21.5 x 21.5	<a href="#">2213258-1</a> <sup>1</sup> / <a href="#">2213258-2</a> <sup>2</sup>		<a href="#">2-2154857-3</a> <sup>6</sup>	
	LC040B	17 mm	21.5 x 21.5	<a href="#">2213258-1</a> <sup>1</sup> / <a href="#">2213258-2</a> <sup>2</sup>		<a href="#">2-2154857-3</a> <sup>6</sup>	
SEOUL	SDW 13.5* 13.5 Series	8.6 mm	13.5 x 13.5		<a href="#">2213678-5</a> <sup>4</sup> / <a href="#">2213678-6</a> <sup>4</sup>		
	SBWW1F1A	10 mm	13.25 x 13.25			<a href="#">2-2154857-1</a> <sup>6</sup>	
	SBWW2F1A	13.9 mm	17.25 x 17.75			<a href="#">2-2154857-2</a> <sup>6</sup>	
	SDW 19* 19 Series	14.6 mm	19 x 19	<a href="#">2213254-1</a> <sup>1</sup> / <a href="#">2213254-2</a> <sup>2</sup>			
	SDW 28* 28 Series	22.6 mm	28 x 28	<a href="#">2213480-1</a> <sup>1</sup>			
SHARP	Petit Zenigata	5.7 mm	8 x 12			<a href="#">2-2154857-1</a> <sup>6</sup>	
	Mini Zenigata	10 mm	12 x 15		<a href="#">2213118-1</a> <sup>3</sup> <a href="#">2213678-3</a> <sup>4</sup> / <a href="#">2213678-4</a> <sup>4</sup>	<a href="#">2-2154857-1</a> <sup>6</sup>	<a href="#">2174306-1</a>
	Mega Zenigata	17.2 mm	20 x 24	<a href="#">2213130-1</a> <sup>1</sup> / <a href="#">2213130-2</a> <sup>2</sup>		<a href="#">2-2154857-3</a> <sup>6</sup>	
TRIDONIC	SLE-G5-LES6	6 mm	13.5 x 13.5		<a href="#">2213678-5</a> <sup>4</sup> / <a href="#">2213678-6</a> <sup>4</sup>	<a href="#">6-2154874-2</a> <sup>5</sup> / <a href="#">2-2154857-2</a> <sup>6</sup>	
	SLE-G5-LES11	11 mm	13.5 x 13.5		<a href="#">2213678-5</a> <sup>4</sup> / <a href="#">2213678-6</a> <sup>4</sup>	<a href="#">6-2154874-1</a> <sup>5</sup> / <a href="#">2-2154857-1</a> <sup>6</sup>	
	SLE-G5-LES15	15 mm	19 x 19	<a href="#">2213254-1</a> <sup>1</sup> / <a href="#">2213254-2</a> <sup>2</sup>		<a href="#">6-2154874-1</a> <sup>5</sup> / <a href="#">2-2154857-1</a> <sup>6</sup>	
	21.0 x 21.0 SLE-G4-SNC	16 mm	21 x 21			<a href="#">2-2154857-2</a> <sup>6</sup>	
	31.0 x 31.0 SLE-G5-LES19	19 mm	31 x 31			<a href="#">2-2154857-3</a> <sup>6</sup>	
	31.0 x 31.0 SLE-G5-LES23	23 mm	31 x 31			<a href="#">2-2154857-3</a> <sup>6</sup>	

OTHER ACCESSORIES		
	OPTIC Reflector LUXEON S/Type LS spot optic	<a href="#">1-2154430-1</a>
	Optic attachment ring for LEDIL: ANGELA series F13662 ANGELINA F13402ANGELINAW	<a href="#">2213194-1*</a>
	Optic attachment ring for Khatod	<a href="#">2213349-1**</a>

\* Fits to Z50 Zhaga Profile Holder  
\*\* Fits to Z50 Low and Zhaga Profile Holder

## LET'S CONNECT

We make it easy to connect with our experts and are ready to provide all the support you need. Just call your local support number or visit [www.te.com/industrial](http://www.te.com/industrial) to chat with a Product Information Specialist.

## Technical Support

[te.com/support-center](http://te.com/support-center)

## FOR MORE INFORMATION

[lumawise.com](http://lumawise.com)

### TE Technical Support Center

Internet:	<a href="http://te.com/help">te.com/help</a>
USA:	+1 (800) 522-6752
Canada:	+1 (905) 475-6222
Mexico	+52 (0) 55-1106-0800
Latin/S. America:	+54 (0) 11-4733-2200
Germany:	+49 (0) 6251-133-1999
UK:	+44 (0) 800-267666
France:	+33 (0) 1-3420-8686
Netherlands:	+31 (0) 73-6246-999
China:	+86 (0) 400-820-6015

Part numbers in this brochure are RoHS Compliant\*, unless marked otherwise.

\*as defined [www.te.com/leadfree](http://www.te.com/leadfree)



TE Connectivity is a participating member of the Zhaga Consortium, an industry-wide cooperation enabling the interchangeability of LED light sources and simplifying LED applications for general lighting.

## te.com

Lumawise, TE Connectivity, TE Connectivity (logo) and Every Connection Counts are trademarks. All other logos, products and/or company names referred to herein might be trademarks of their respective owners.

The information given herein, including drawings, illustrations and schematics which are intended for illustration purposes only, is believed to be reliable. However, TE Connectivity makes no warranties as to its accuracy or completeness and disclaims any liability in connection with its use. TE Connectivity's obligations shall only be as set forth in TE Connectivity's Standard Terms and Conditions of Sale for this product and in no case will TE Connectivity be liable for any incidental, indirect or consequential damages arising out of the sale, resale, use or misuse of the product. Users of TE Connectivity products should make their own evaluation to determine the suitability of each such product for the specific application.

© 2016 TE Connectivity Ltd. family of companies All Rights Reserved.

8-1773700-9 10/16 JN