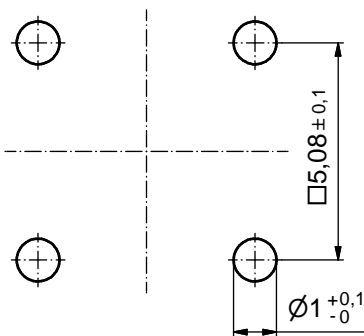


| ⑥                                      |            |
|--|------------|
| PLATING ITEM 1                         | PART-NO.   |
| GOLD FLASH over NICKEL                 | 124A10019X |
| 30µin HARD GOLD over min. 50µin NICKEL | 124C10019X |

- ⑥ NOTES:
1. MATERIAL: COPPER ALLOY
  2. PLATING:
    - ITEM 1: SEE TABLE
    - ITEM 2: GOLD FLASH over NICKEL
    - ITEM 3: GOLD FLASH over NICKEL
    - ITEM 4: NICKEL PLATED

P.C.B. HOLE DRILLINGS ⑥



Directive 2002/95/EC RoHS compliant

|   |             |            |       |                     |  |                    |   |                 |
|---|-------------|------------|-------|---------------------|--|--------------------|---|-----------------|
| THIS DRAWING MAY NOT BE COPIED OR REPRODUCED IN ANY WAY, AND MAY NOT BE PASSED ON TO A THIRD PARTY WITHOUT WRITTEN PERMISSION. OWNERSHIP AND COPYRIGHT OF CONEC GmbH DO NOT ALTER CAD DRAWING BY HAND |             |            |       | tolerance           |  | dim. in mm         | scale: 10:1   |                 |
|   |             |            |       | material: SEE NOTES |  |                    | title: HIGH POWER CONTACT FEMALE SOLDER PIN 90° for DIN EN 60603 TYPE "M" |                 |
| drawn   |             | date       |       | name                |  | dwg no:            |   | DIN-A3<br>sh: 1 |
| appd.   |             | date       |       | name                |  | 12K1A031A          |   |                 |
| norm  |             | d-old      |       | CONEC®              |  | part no: SEE TABLE |   |                 |
| 5 x b   | Ä4578       | 12.12.2012 | Lehm. |                     |  |                    |   |                 |
| a   | Original    |            |       |                     |  |                    |   |                 |
| rev.  | description | date       | name  |                     |  |                    |   |                 |