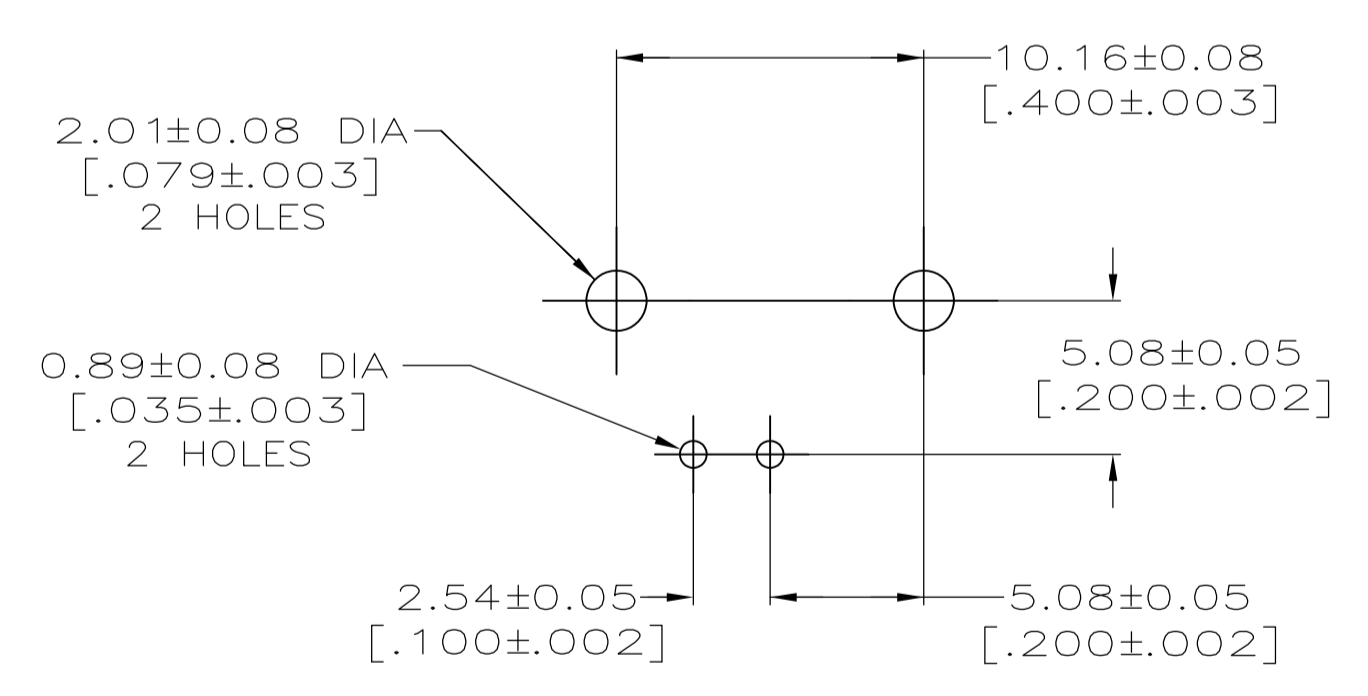
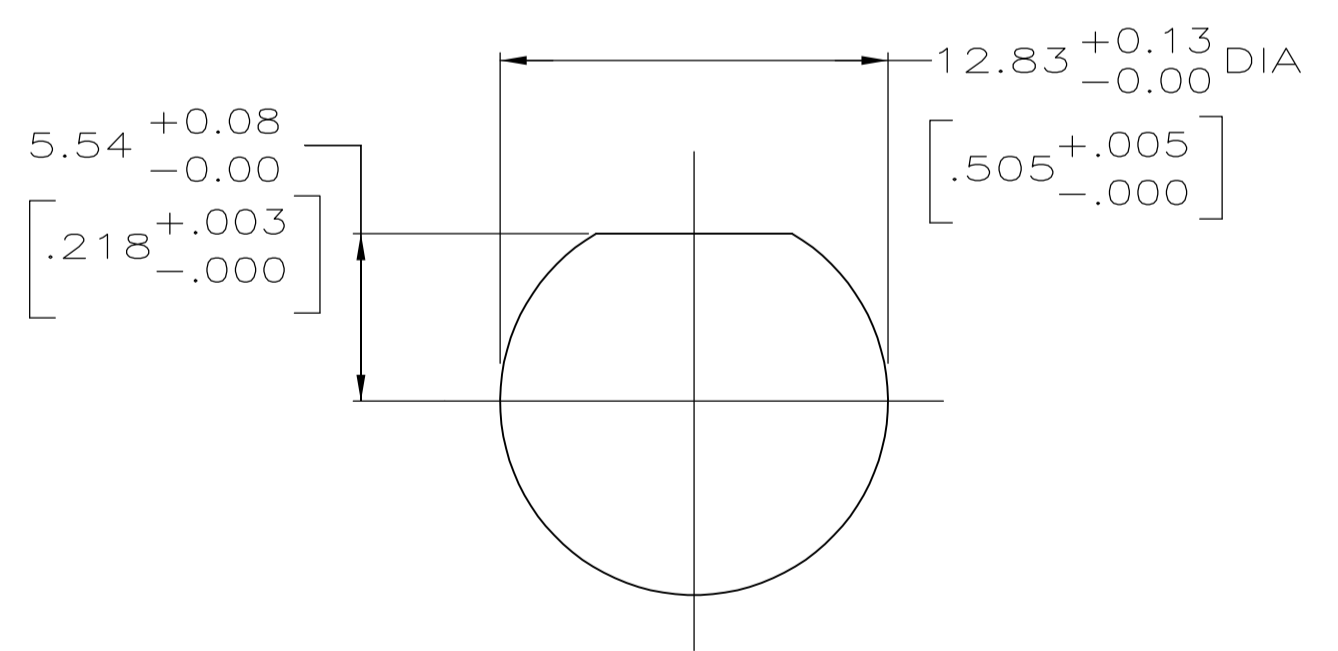
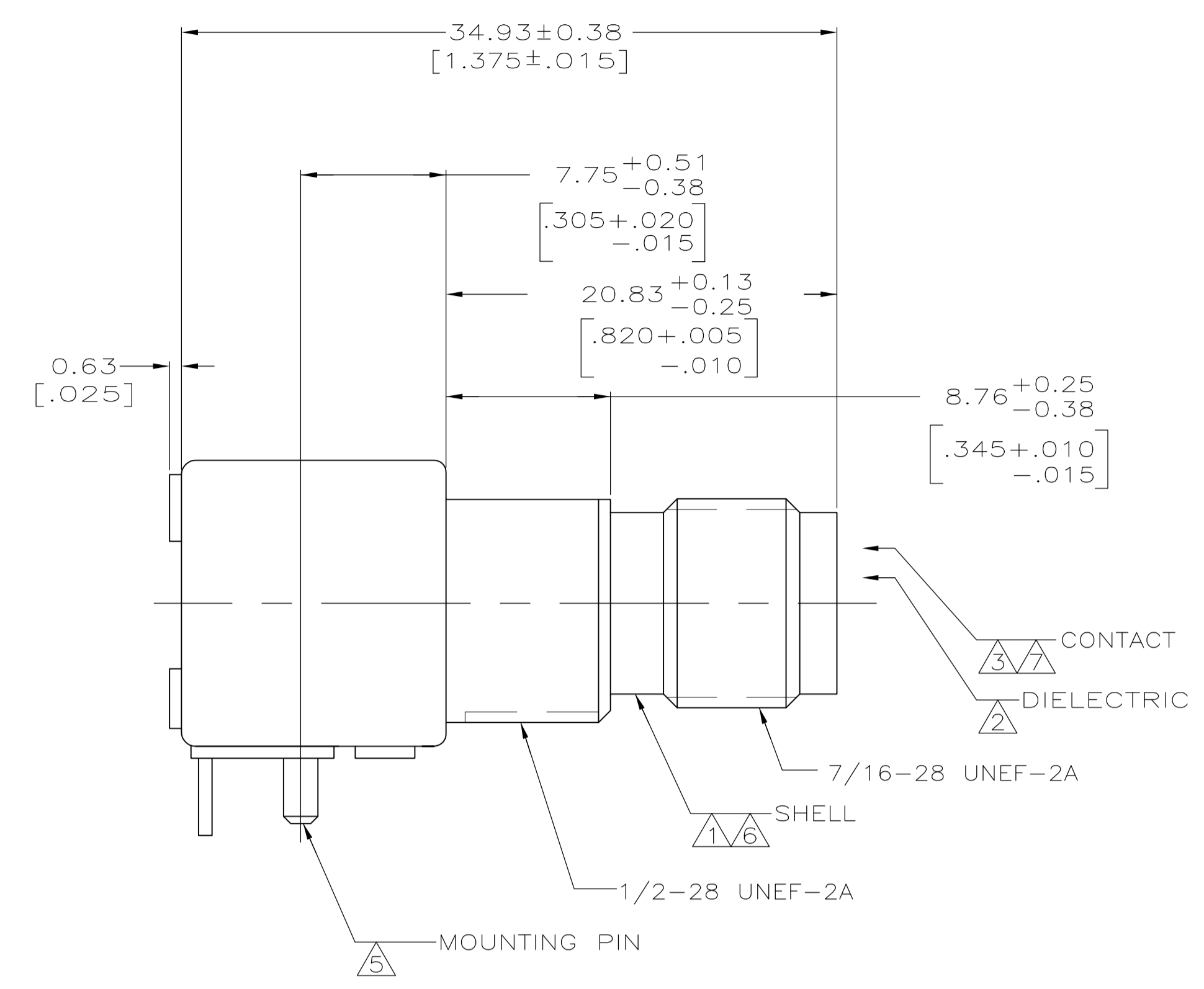
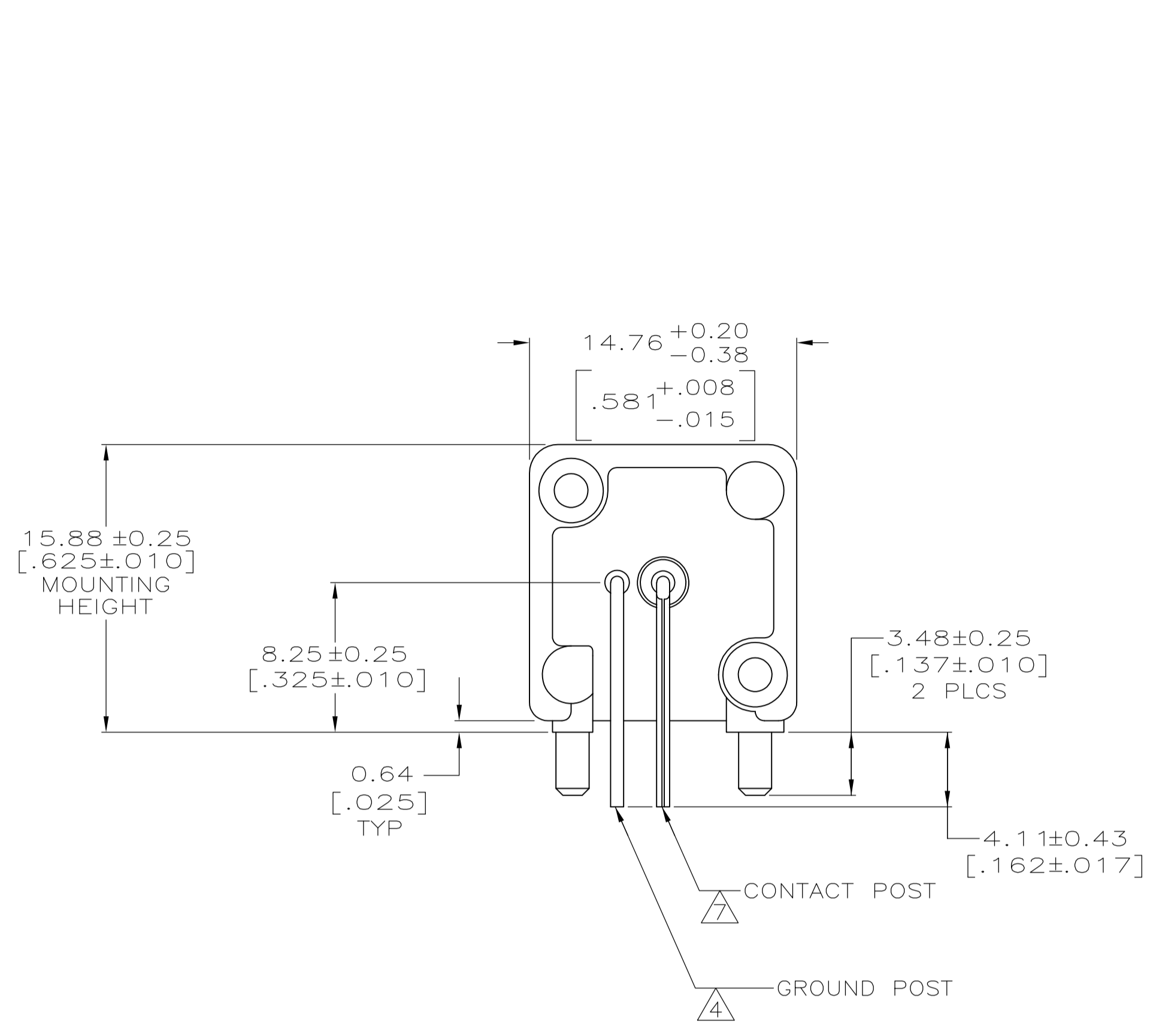


LOC	DIST	REVISIONS			
P	LTR	DESCRIPTION	DATE	DMN	APVD
AJ	16	REVISED PER ECO-11-005030	11MAR11	RK	HMR



- ① ZINC PER QQ-Z-363.
- ② POLYMETHYLPENTENE, GENERAL PURPOSE.
- ③ PHOSPHOR BRONZE PER QQ-B-750.
- ④ BRASS PER ASTM-B-453.
- ⑤ BRASS PER ASTM-B-16.
- ⑥ NICKEL PLATE PER QQ-N-290, 3.81 μm [.000150] MINIMUM THICK.
- ⑦ GOLD PLATE PER MIL-G-45204, 0.76 μm [.000030] MINIMUM THICK.

RECOMMENDED PANEL CUTOUT

PCB CONFIGURATION

5227839-1
PART NUMBER

THIS DRAWING IS A CONTROLLED DOCUMENT.		DIN L VARELA - DOCKS 21APR2005	TE Connectivity
DIMENSIONS: mm [INCHES]		CHK J HAVENER 21APR2005	
TOLERANCES UNLESS OTHERWISE SPECIFIED:		APVD J LIPPERT 21APR2005	NAME
0 PLC ± -	1 PLC ± -	PRODUCT SPEC	JACK, RIGHT ANGLE, 50 OHM, PCB, TNC
2 PLC ± 0.20 [.008]	3 PLC ± -	APPLICATION SPEC	SIZE CAGE CODE DRAWING NO
4 PLC ± -	ANGLES ± -	RESTRICTED TO	A1 00779 C=5227839
MATERIAL SEE NOTES 1-4	FINISH SEE NOTES 5-7	WEIGHT	CUSTOMER DRAWING
		SCALE 4:1	SHEET 1 OF 1 REV A1